

## An inspiring past, an exciting future

This year we marked important new milestones in our long and distinguished history of medical excellence.

The Royal Perth Hospital (RPH) Emergency Department (ED) as we know it today and Kalamunda Hospital (KH) both celebrated **50th anniversaries**, and valued staff members were recognised for dedicated half centuries of service.

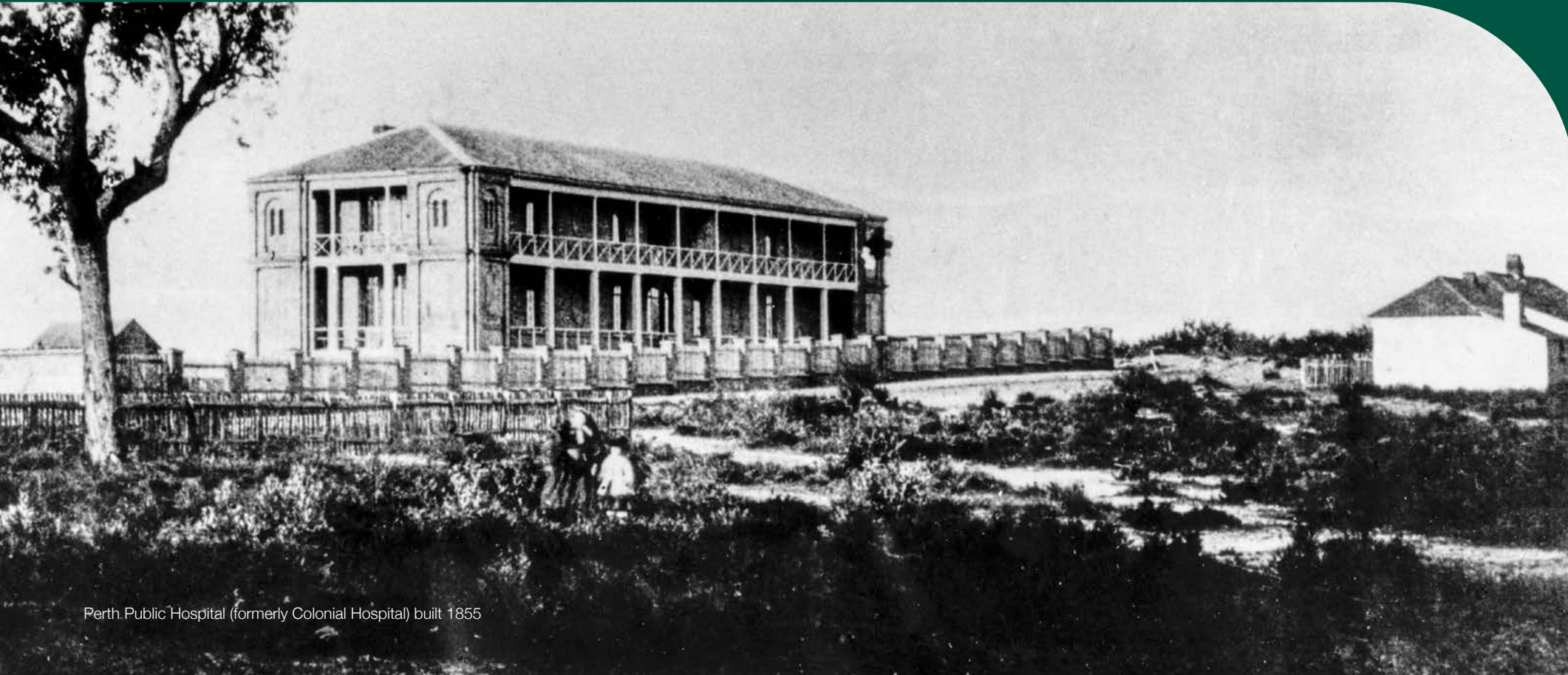
The anniversaries were a chance to reflect on the many years of care the various arms of East Metropolitan Health Service (EMHS) and our people have provided generations of Western Australians.

Incredibly RPH has been at the heart of medical care in WA, in various forms, since the Swan River Colony in the mid-1800s - and its origins extend even further back to 1829.

Each new milestone – like those reached this year – is a step further into an exciting future where we will continue to lead and break new ground in health care for generations to come.

As we look to the next financial year, we will draw inspiration from the rich tapestry of our past and the healthcare workers and decision makers whose commitment leaves a lasting legacy at EMHS.

Our health services are built on the strong foundations of this past.



Perth Public Hospital (formerly Colonial Hospital) built 1855







# Fifty years of emergency care

The Royal Perth Hospital (RPH) Emergency Department (ED) is one of the busiest in Australia, with roots that stretch back 50 years.

This year, there were **78,705** presentations to the RPH ED, adding another year of achievement to a medical legacy that began when it opened its doors on 5 October 1973.

The ED was part of a masterplan adopted by the RPH Board of Management in mid-1973, aimed at ensuring the hospital could meet most of WA's demand for emergency care “for some years to come”.

It occupied almost the entire first floor of a new Southeast Extension, with state-of-the-art equipment placing it in the forefront of similar centres in Australia.

WA's population at the time was 1.1 million.

Half a century later, we celebrated the ED's evolution through decades of medical advances and social changes, and the crucial role the ED plays, servicing a fast-growing state of 2.9 million people.

We also acknowledged the vital role the ED continues to play in the world class training of future generations of medical and nursing staff.

The Hon Amber-Jade Sanderson MLA, Minister for Health; Mental Health, was among 100 people at the 50th celebration held in the historic Kirkman House on 13 October 2023. Other attendees included EMHS Chief Executive Dr Lesley Bennett, our Board members and past and present ED staff.

“All West Australians have been touched in some way by the outstanding contributions that RPH ED has made to the community,” Minister Sanderson said.

## DID YOU KNOW?

In 1973-74 Royal Perth Hospital had **40,123** emergency (casualty) attendances.



Above: External foundations for extensions to South-East Wing and site for new steam plant - old intersection of Victoria Square and Lord Street.

Below: New South-East extensions





# Golden jubilee for Kalamunda

Kalamunda Hospital (KH) has come a long way since it opened 50 years ago.

Having recently undergone a \$9.5 million upgrade, it is an established part of the hills community and known for the important care it provides for people at the end of their lives, including WA's first public palliative care day hospice.

A celebration in the hospital grounds to mark its 50th anniversary brought together past and present staff, community members, EMHS Board members and guests such as the Hon Lorna Harper MLC, Member for the East Metropolitan Region.

Originally called the Kalamunda Spa Hospital, it opened on 7 October 1973 on a 5-hectare plot of land overlooking a scenic valley that had been a gravel pit owned by the Shire of Kalamunda.

The hospital was built by a private company with 25 shareholders but was acquired by the WA government about a year later and renamed the Kalamunda District Hospital. Its first patients were admitted for general and maternity care.

In the decades since, KH has served many medical purposes. But it is breaking new ground in its current role providing specialist palliative services and end-of-life care.

EMHS Board member Ross Keesing was part of the original Kalamunda District Hospital Board and has witnessed the transformation.

“As I’ve observed over the last 50 years, it’s amazing to see how people feel attached to the hospital. They feel like it’s their hospital,” Ross said.



Kalamunda Hospital 50 year anniversary celebrations

# Fifty years of commitment

Incredibly, 5 dedicated RPH staff members have celebrated a 50-year journey with us this year.

These 5 staff members from EMHS and RPH were each recognised for half centuries of service and received congratulatory letters from the Hon Amber-Jade Sanderson MLA, Minister for Health; Mental Health.

They were Ward Clerk Tina De Vellerez, Senior Project Officer Steven Dallas, Patient Support Services’ Ian Hewitson, Manager of Cardiac Services Michelle Mikulich and Medical Director Pulmonary Physiology David Bucens.

The Minister thanked them for their incredible years of service and significant contribution to the WA community.

Our staff are at the heart of our services and right across our organisation achieve amazing things every day. More than 100 other staff reached milestones of 20, 30 and 40 years on the job.



Ian Hewitson, Tina De Vellerez and Steven Dallas


# Statement of compliance

For year ended 30 June 2024

**Honourable Amber-Jade Sanderson MLA,  
Minister for Health; Mental Health**

In accordance with section 63 of the *Financial Management Act 2006*, we hereby submit for your information and presentation to Parliament, the final Annual Report of East Metropolitan Health Service for the financial year ended 30 June 2024.

This Annual Report has been prepared in accordance with the provisions of the *Financial Management Act 2006*.



**Pia Turcinov AM**  
Board Chair  
East Metropolitan Health Service  
11 September 2024



**Peter Forbes**  
Chair, Board Finance Committee  
East Metropolitan Health Service  
11 September 2024



# Acknowledgment of Country

**Nitja Noongar Boodja, Ngalak Whadjuk Moort Noongar Boodja, unna.  
Ngalak Noongar Bridiya, Koora — nitja — boordawaan.**

East Metropolitan Health Service (EMHS) recognises the Whadjuk people of the Noongar Nation as the Traditional Owners of the land which we live, learn and work on today. We acknowledge that the Whadjuk people have a continuing spiritual and cultural connection to this land and pay respect to all Noongar Elders past, present and emerging. We welcome all Aboriginal and non-Aboriginal people to our services.

## Acknowledgment of the Aboriginal community

The voice of Aboriginal peoples and communities is reflected in the EMHS 2023-24 Annual Report to ensure that cultural appropriateness and the health impacts on Aboriginal peoples have been considered and incorporated.

## Cultural warning

The EMHS 2023-24 Annual Report may contain articles that display names and images of Aboriginal persons and their artwork who have passed away.

EMHS respects and understands the cultural norms – relating to the display of Aboriginal or Torres Strait Islander people who have passed away – for the artists and their families.



### The Aboriginal community

Within Western Australia (WA), the term Aboriginal peoples is used in preference to Aboriginal and Torres Strait Islander peoples, in recognition that Aboriginal peoples are the original inhabitants of WA. No disrespect is intended to the Torres Strait Islander community.



# EMHS Chief Executive and Board Chair introduction

It is with great pleasure that we present our first Annual Report working together as Board Chair and Chief Executive, for East Metropolitan Health Service (EMHS).

The 2023-24 report highlights the ever-changing health landscape that we have had to address while also ensuring sound fiscal management balanced with our steadfast focus on delivering on our vision of *healthy people, amazing care*.

Significantly, none of this could be achieved without the commitment, care and compassion of our 10,000 plus wonderful staff.

Global and national accolades reinforce the fact that we have some of the very best clinicians in the world. Armadale Health Service’s outstanding results as part of the ‘Every Week Counts’ national research study and Royal Perth Hospital’s globally applauded injectable HIV therapy are such examples. However, what many people do not realise is the integral role our support staff play in the delivery of worldclass care, 24 hours a day, 7 days a week, 365 days a year, across our hospitals and community services.

During the past 12 months, the way we deliver that care to patients has also started to change, as outlined in the report, with the instigation of ‘Care Beyond Hospital Walls’ to help address the emerging challenge of meeting current and anticipated future demand.

In addition, patients now have the option to consult with healthcare providers from the comfort of their homes or residential care providers - reducing the burden of travel, particularly for those with long term conditions or mobility challenges.

We have enormous expertise in this new approach and have already embraced digital technology, including telemedicine and remote monitoring, as an integral part of our service. To further strengthen this, our innovative original Health In a Virtual Environment (HIVE) and now expanded Community HIVE (Co-HIVE), are encompassed within our newly established Community and Virtual Care Innovation Directorate.

The fusion of community-based healthcare and virtual technologies to provide ‘whole of person care’ is perfectly illustrated with the development of the innovative Byford Health Hub to incorporate multiple different health, social and community services in the same building and embrace ‘place-based systems of care’.

We are delighted to be effectively meeting the present and future healthcare needs of our patients. Our commitment to excellence aligns with our EMHS values and drives us to exceed the expectations of our community.



Left:  
**Dr Lesley Bennett**  
Chief Executive  
East Metropolitan Health Service

**Pia Turcinov AM**  
Board Chair  
East Metropolitan Health Service